



REPORT

**2023 Annual Inspection Report for
CCR Landfill**

Gulf Clean Energy Center CCR Landfill #2

Pensacola, Florida

Submitted to:

Florida Power & Light Company

Submitted by:

WSP USA Inc.

5170 Peachtree Road

Bldg 100 Suite 300

Atlanta, GA 30338

January 19, 2024



Distribution List

Florida Power & Light Company

WSP USA Inc.

INTRODUCTION

WSP USA Inc. (WSP; formerly known as Golder Associates USA Inc.) performed the annual inspection for a coal combustion residuals (CCR) landfill at the Gulf Clean Energy Center (GCEC) Landfill #2, located in Pensacola, Florida. This facility is owned and operated by Florida Power & Light Company (FPL). The inspection, conducted on November 15, 2023, and this report are intended to meet the requirements of 40 CFR §257.84(b). WSP's inspection was performed by Kevin S. Brown, PE.

While the Gulf Clean Energy Center ceased coal fired operations in October 2020, GCEC Landfill #2 is currently active for the management and beneficial reuse of materials.

REVIEW OF AVAILABLE INFORMATION – §257.84(b)1(i)

In accordance with §257.84(b)1(i), WSP reviewed available information regarding the status and conditions of the GCEC Landfill #2. The documents reviewed included:

- Closure Plan (Rev. 02 July 2023) – Gulf Clean Energy Center Landfill #2
- Run-On and Run-Off Control System Plan (October 2021) – Gulf Clean Energy Center Landfill #2
- Report of Annual Inspection 2022 (January 2023) – Gulf Clean Energy Center Landfill #2

INSPECTION SUMMARY – §257.84(b)1(ii)

WSP conducted a visual inspection of the GCEC Landfill #2 on November 15, 2023. The inspection evaluated the geometry and conditions of the landfill, exterior slopes, erosion and vegetative conditions, stormwater management controls, placement of coal combustion residuals (CCR), and any other signs of distress or malfunction.

CHANGES IN GEOMETRY – §257.84(b)2(i)

Since the past annual inspection, there were no observed changes in the geometry of the landfill.

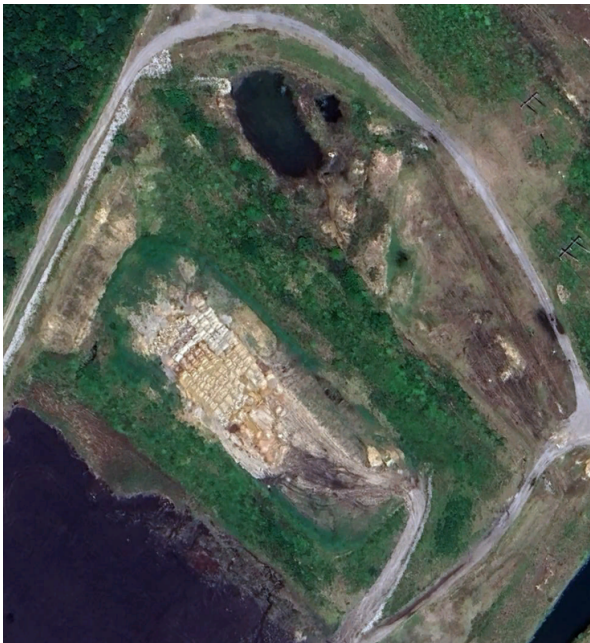


Figure 1: Aerial Photograph - 2023

APPROXIMATE CCR AND WATER VOLUME – §257.84(b)2(ii)

The volume of materials contained in the GCEC Landfill #2 at the time of the inspection is estimated to be approximately 246,100 cubic yards of CCR.

STRUCTURAL WEAKNESS AND DISRUPTING CONDITIONS – §257.84(b)2(iii)

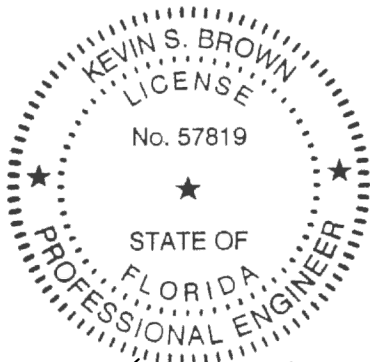
No indications of actual or potential structural weakness were noted during the November 15, 2023 inspection or during the review of available information.

CHANGES AFFECTING STABILITY OR OPERATIONS – §257.84(b)2(iv)

Based on the November 15, 2023 inspection and review of available information, no changes from the previous inspection that may affect the operations or stability of the GCEC Landfill #2 were observed.

CERTIFICATION

Based on the review of the available information noted above and of the observations and results of the annual inspection, it is my professional opinion that this report has been completed in accordance with 40 CFR 257.84(b).



This item has been digitally signed and sealed by Kevin Brown on the date adjacent to the seal.

Printed copies of this document are not considered signed and sealed and the signature must be verified on any electronic copies.

Kevin S. Brown

Jan. 19, 2023

Kevin S. Brown, PE
Director, Civil Engineer
Florida Professional Engineer No. 57819

Date

KSB/LS/lS



wsp.com