



Confidential: For Florida Power & Light Company use only. Updated: 04/06/2006


Capacitor	2	UG Fuse Switch	8
Elbow	186	UG Switch	8
Fault Indicator	2	UG Transformer	27
OH Fuse Switch	101	Vault Transformer	4
OH Switch	56		
OH Transformer	37		
Primary Break	1		

Lat/Long: 26.2588 N 80.1532 W	
OH Primary length (mi)	UG Primary length (mi)
Lateral: 0.82	Lateral: 2.56
Feeder: 2.51	Feeder: 0.59
Total: 3.33	Total: 3.15
% Lateral: 24.6%	% Lateral: 81.4%
% Feeder: 75.4%	% Feeder: 18.6%

ANDREWS 09432

Address: 2301 N. Powerline Road
 Mgmt Area: Pompano District Code: 73
 Svc Ctr: Pompano Total Customers: 345

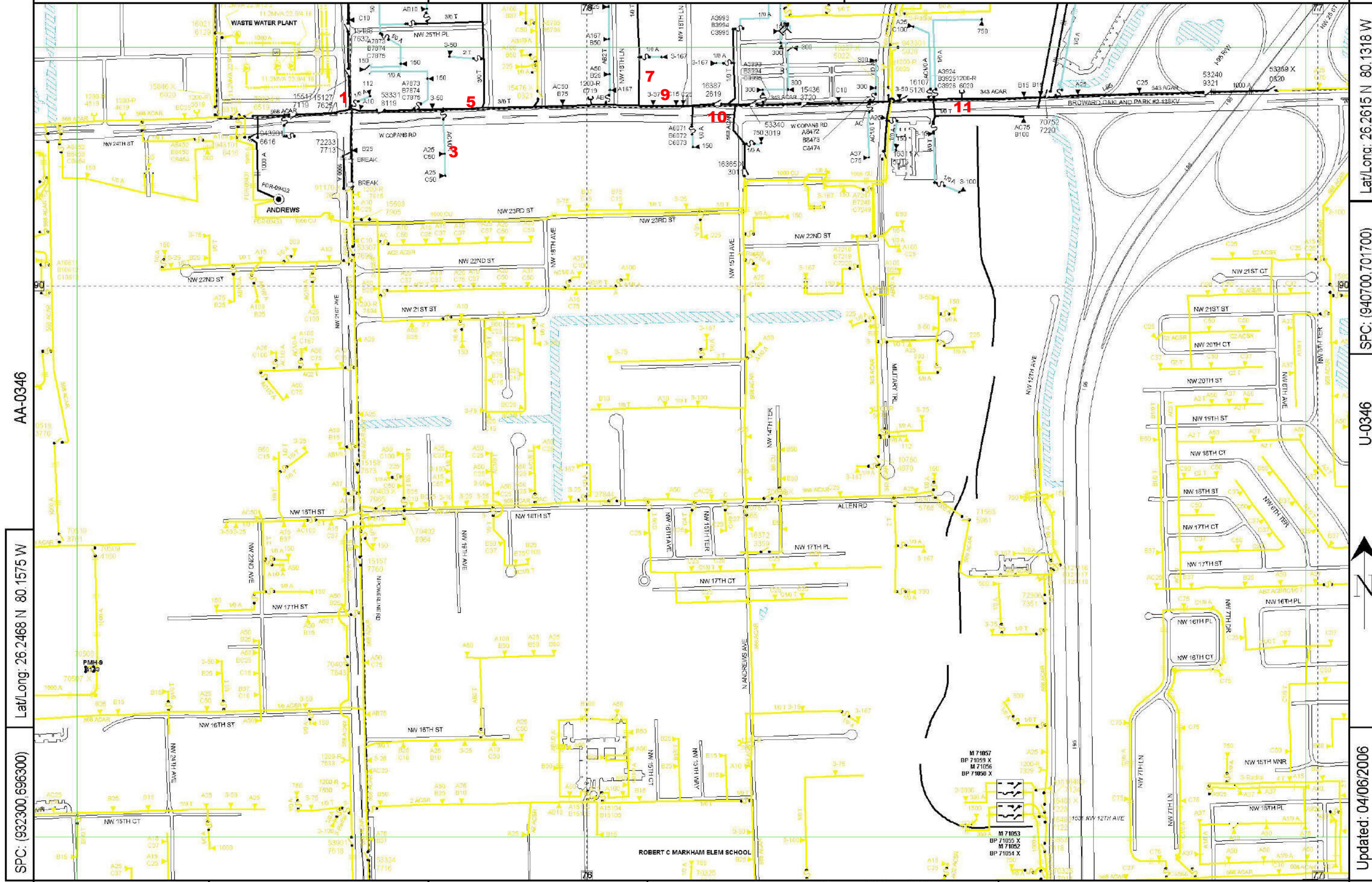
0 421 843 FT



Call before you dig! 1-800-432-4770

X-0349

Confidential: For Florida Power & Light Company use only.



AA-0346

Lat/Long: 26.2468 N 80.1575 W

SPC: (932300,696300)

Lat/Long: 26.2615 N 80.1318 W

SPC: (940700,701700)

U-0346

Updated: 04/06/2006

County: Broward

Mgmt Area: Pompano

Svc Ctr: Pompano

X-0343

0 300 600 FT

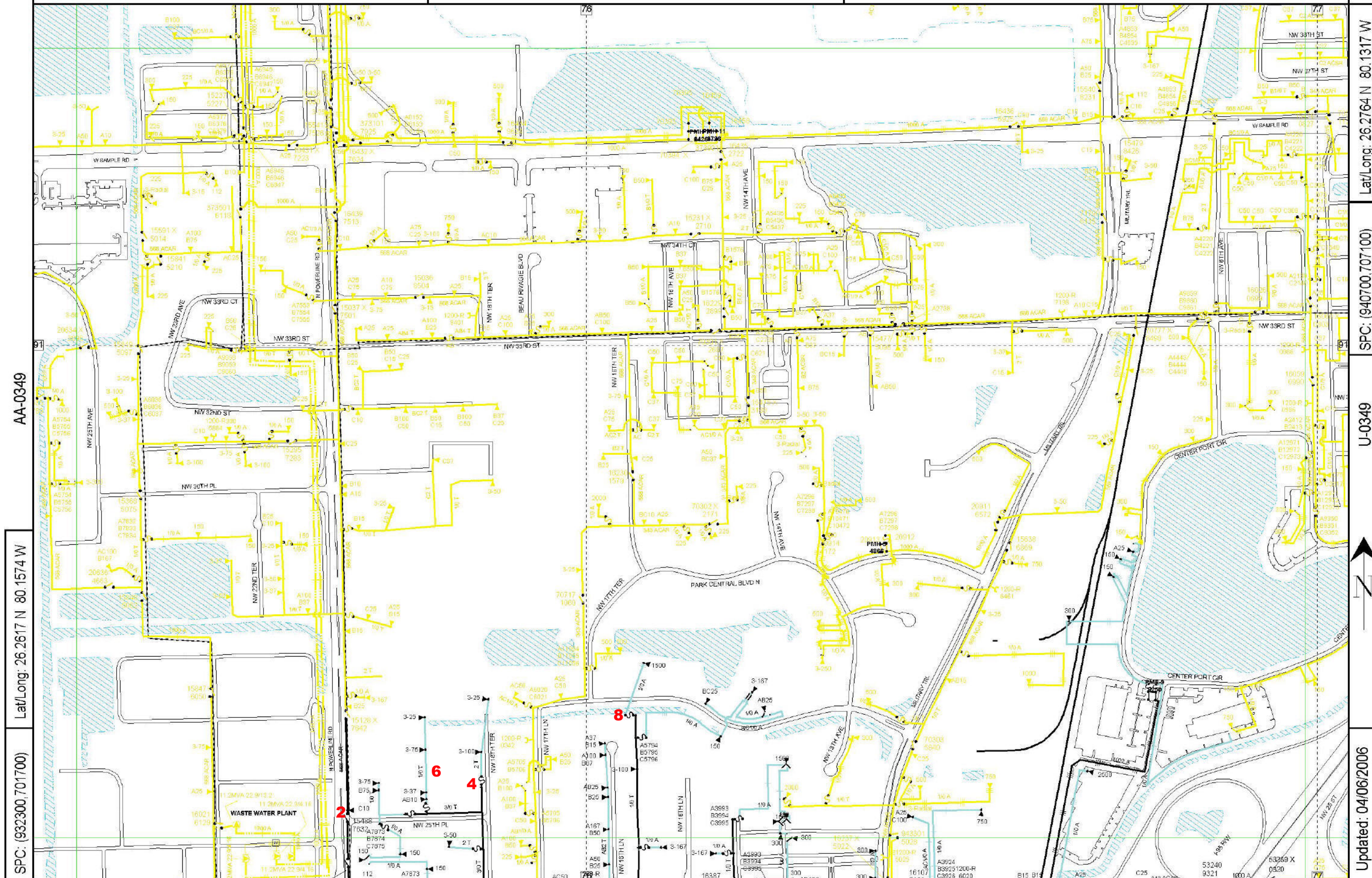
Circuit Map: X-0346 ANDREWS 09432

Training purposes only. Do NOT use for patrolling or other map work

Call before you dig! 1-800-432-4770

X-0352

Confidential: For Florida Power & Light Company use only.



AA-0349

Lat/Long: 26.2617 N 80.1574 W

SPC: (932300,701700)

Lat/Long: 26.2764 N 80.1317 W

SPC: (940700,707100)

U-0349

Updated: 04/06/2006

County: Broward

Mgmt Area: Pompano

Svc Ctr: Pompano

X-0346

0 300 600 FT

Circuit Map: X-0349 ANDREWS 09432

Training purposes only. Do NOT use for patrolling or other map work